



PRODUCT CATALOGUE 3.15

Innovative dental solutions

- + Filling materials
- + Bonding systems
- + Desensitizer
- + Cements
- + Relining materials

That figures! TOKUYAMA – quality products from Japan

INNOVATIVE DENTAL SOLUTIONS

TOKUYAMA Corporation



Research & Development Centre in Tsukuba

Japan – the land of the rising sun

The parent company of TOKUYAMA DENTAL, TOKUYAMA CORPORATION, now looks back on over 90 years of successful history as a diversified international chemical group. Over the years the product portfolio has been expanded continuously and it now contains a wide range of special-purpose chemical products, including product solutions for the dental market.

TOKUYAMA began developing and manufacturing dental materials over 30 years ago. Our philosophy of developing innovative dental solutions aims to make an ongoing and sustainable contribution towards offering top-quality products and state-of-the-art solutions for dentistry.

Our always innovative technological developments contribute to continuous enhancement of the dental market. An important acknowledgement of this was currently experienced by our Research & Development team in 2015. "DENTAL ADVISOR", the internationally recognised organisation, honoured TOKUYAMA DENTAL as the supplier of the best product in three product categories.

TOKUYAMA DENTAL received an award for the best composite, the best flowable composite and the best soft relining composite material. Our 7th generation self-etch bonding agent and our desensitizer also ranked among the main products that won awards.

TOKUYAMA DENTAL products increase the efficiency of dental work and simultaneously allow optimal dental solutions.



TOKUYAMA DENTAL Deutschland GmbH, Altenberge

TOKUYAMA DENTAL Deutschland GmbH has its head office in Altenberge, near Münster. If you have any enquiries or requests concerning products, that is where you will receive personal and professional advice.

PRODUCTS

Filling materials

ESTELITE ASTERIA	6
ESTELITE COLOR	7
ESTELITE SIGMA QUICK	8
ESTELITE FLOW QUICK	10
ESTELITE FLOW QUICK HIGH FLOW	11
ESTELITE LV	12
ESTELITE POSTERIOR QUICK	12



Bonding systems

BOND FORCE II	13
EE-BOND & ETCHING GEL HV	14
ONE-UP BOND F PLUS	15

Desensitizer

SHIELD FORCE PLUS	16
-------------------	----



Cements

ESTECM	17
UNIVERSAL PRIMER	18
IONOTITE F	19

Relining materials

REBASE II FAST	20
SOFRELINER TOUGH M	21
SOFRELINER TOUGH S	21
SILICONE REMOVER	22



Accessories

PLT organiser	22
Syringe organiser	22

ESTELITE

The development concept

A synthesis of aesthetics, reliability and user-friendliness

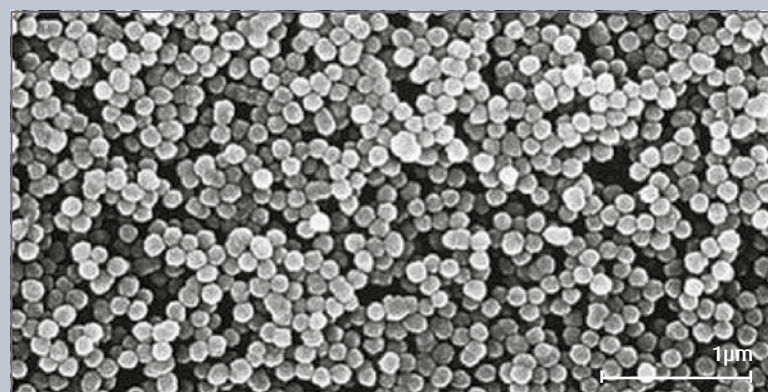
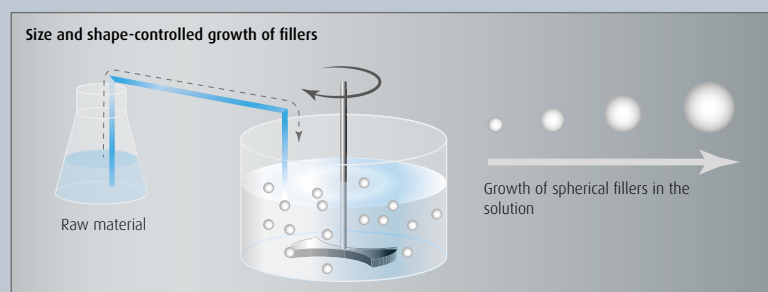
It was a well thought-out and innovative development concept that brought about the outstanding composite ESTELITE. Size and shape-controlled spherical sub-micron fillers, that are produced in a delicate manufacturing process, are

setting new standards for aesthetic composite restorations. Many years of development preceding the manufacturing process for fillers with special aesthetic, physical and user-friendly properties constitute the

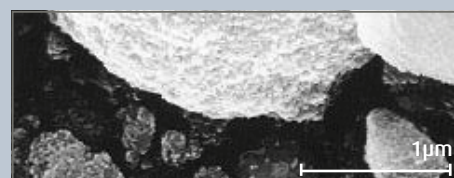
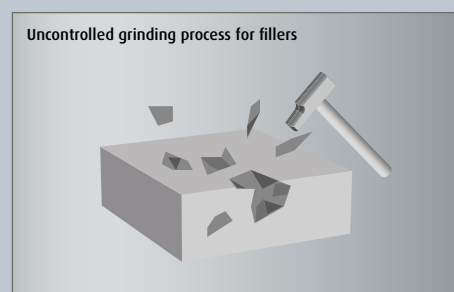
basis of excellent results. An innovative and controllable polymerisation process makes ESTELITE easy to apply according to the user's requirements.

Production to perfection – ultrafine, spherical fillers

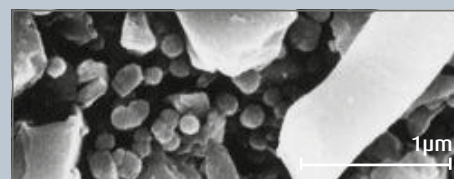
Comparison of production methods: sol-gel method versus conventional grinding process



ESTELITE SIGMA QUICK (TOKUYAMA)

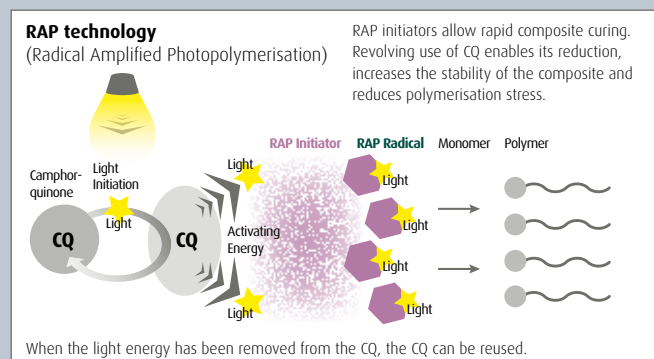


Filtek Supreme XT (3M Espe)

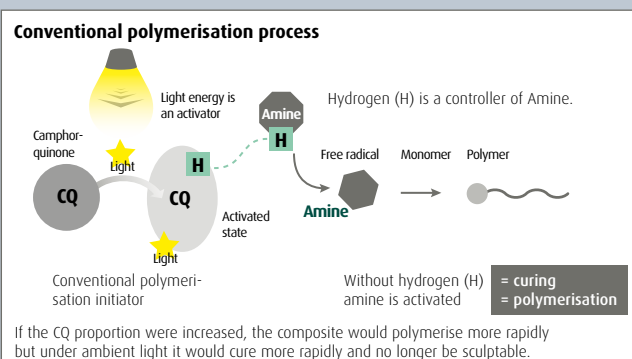


Tetric EvoCeram (Ivoclar Vivadent)

Controlled “QUICK” polymerisation – application to suit requirements



10 seconds of polymerisation time
90 seconds of working time

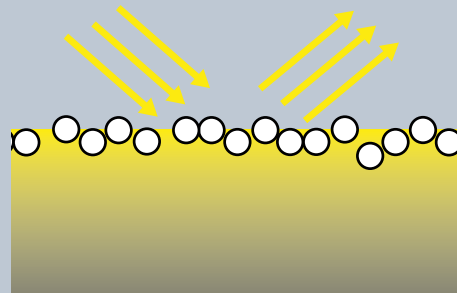


20 – 30 seconds of polymerisation time
50 – 70 seconds of working time

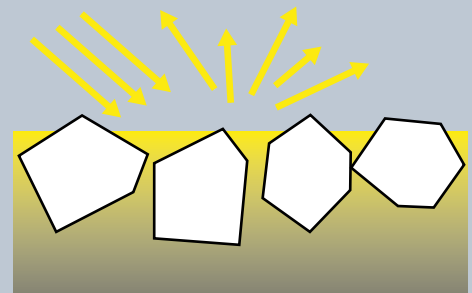
The principle of aesthetics and reliability – ultrafine, spherical fillers

Mirror reflection

Due to the identically shaped, spherical sub-micron fillers, ESTELITE reflects light uniformly – like a mirror. Whilst on rough surfaces the light is scattered diffusely, on smooth surfaces it is the law of reflection that applies: angle of incidence equals angle of reflection. ESTELITE thus ensures an aesthetic appearance as in nature.



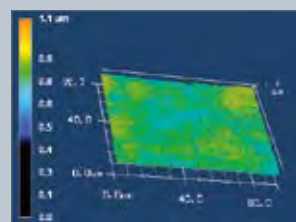
ESTELITE SIGMA QUICK (TOKUYAMA)



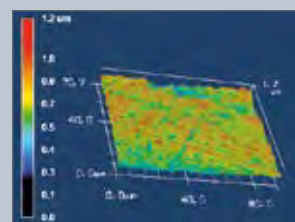
Conventional nano-hybrid fillers

Lustre effect

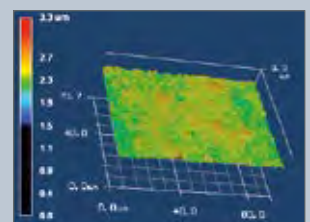
Smooth surfaces reflect light with equal angles of incidence and reflection and create a high degree of lustre. Rough surfaces, on the other hand, reflect light in a non-uniform manner and have a matt visual appearance. The identically shaped ESTELITE sub-micron fillers create an extremely smooth surface.



ESTELITE SIGMA QUICK (TOKUYAMA)



Venus Diamond (Heraeus Kulzer)

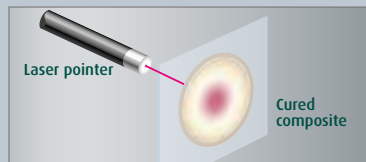


Filtek Supreme XT (3M Espe)

Diffusion and transmission

The high diffusion and transmission of ESTELITE ensure a uniform transition (intergradation) between natural tooth substance and composite. ESTELITE acts

like natural tooth enamel and ensures excellent adaptation to the margin of the restoration, even without bevels.



ESTELITE



Virtually identical refractive index of enamel and composite

Nano-hybrid composite



Very different refractive index of enamel and composite



ESTELITE SIGMA QUICK (TOKUYAMA)

Filtek Supreme XT (3M Espe)

Tetric EvoCeram (Ivoclar Vivadent)

Chameleon effect

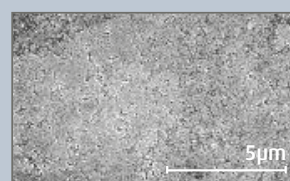
Due to the intelligent combination of shape and size-controlled fillers, ESTELITE adapts to the tooth perfectly. The resulting chameleon effect makes it possible to cover the entire range of shades with just four hues.

ESTELITE	Light																Dark							
	Inc	B1	A1	B2	D2	A2	C1	C2	D4	A3	B3	A3.5	B4	C3	A4	C4								
A1			←●→																					
A2			←●→			←●→																		
A3						←●→				←●→														
A3.5											←●→													

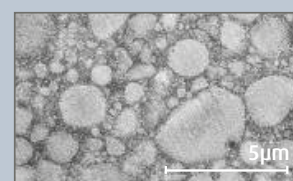
Abrasion resistance

Uniform, small and spherical fillers in ESTELITE offer a minimal area of abrasive attack and produce a high level of abrasion resistance.

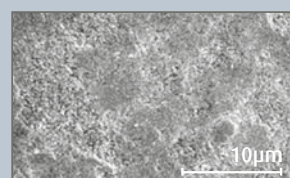
The abrasion-resistant surface of ESTELITE remains permanently smooth, so the lustre of the restoration with ESTELITE is permanent and does not have a matt appearance.



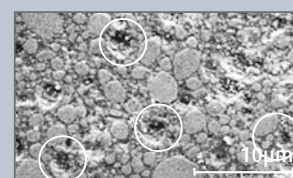
ESTELITE SIGMA QUICK (TOKUYAMA) before the abrasion test.



Filtek Supreme XT (3M Espe) before the test.



ESTELITE SIGMA QUICK (TOKUYAMA) after 50,000 load cycles. Retention of smoothness.



Filtek Supreme XT (3M Espe) after 50,000 load cycles. Fillers that have fallen out are visible.

ESTELITE ASTERIA

High-end composite



Essential Kit



Single syringe

Indications

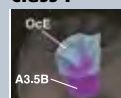
- ✦ Anterior and posterior areas
- ✦ Composite veneers
- ✦ Diastema closure
- ✦ Composite/ceramic repair

Properties

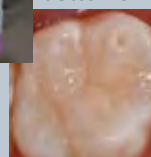
- ✦ Perfect restorations using just 2 shade layers
- ✦ Unique chameleon effect
- ✦ Rapid curing in 10 seconds
- ✦ Extended working time of 90 seconds
- ✦ Very high lustre durability
- ✦ Abrasion resistance
- ✦ Low linear shrinkage
- ✦ Optimal handling

Clinical cases

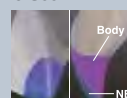
Class I



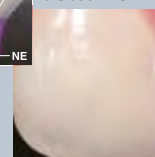
Outcome



Class IV



Outcome



Pack sizes available

Syringe Essential Kit:

- 7 syringes (4g each) in 7 shades
A1B, A2B, A3B, A3.5B, A4B, NE, OcE
- Clinical Guide

Refill:

- Single syringe (4g)

Custom Shade Selector for 15 shades

Available in 12 different shades

Dentine	(7)							
Enamel	(5)							

ESTELITE COLOR

Flowable composite for shade characterisation



Color Kit



Single syringe

Indications

- + Custom shade characterisation of direct and indirect resin restorations
- + Masking of discoloured teeth

Properties

- + 9 different shades
- + 4 different opaques
- + Low viscosity
- + Ideal supplement for ESTELITE ASTERIA



With the aid of the double-ended brush the stains can be applied accurately and as required.

Pack sizes available

Color Kit:

- 13 single syringes (0.9 g each) in 13 shades: blue, grey, lavender, ochre, dark brown, white, yellow, clear, red, pink opaque, low chroma opaque, medium chroma opaque, high chroma opaque

Refill:

- Single syringe (0.9 g)
- Brush No. 24:**
- Pack of 5

Available in 13 different shades

Standard	(9)									
		clear	white	blue	yellow	grey	ochre	red	lavender	dark brown
Opaque	(4)									
		pink	high chroma	medium chroma	low chroma					

ESTELITE SIGMA QUICK

Universal composite



Syringe Kit of 3



System Kit

Indications

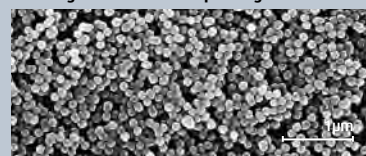
- ✦ Anterior and posterior areas
- ✦ Composite veneers
- ✦ Diastema closure
- ✦ Composite/ceramic repair

Properties

- ✦ Unique chameleon effect
- ✦ Rapid curing in 10 seconds
- ✦ Extended working time of 90 seconds
- ✦ High lustre durability
- ✦ Abrasion resistance
- ✦ Low linear shrinkage
- ✦ Optimal handling

Technical information

Scanning electron microscope images of the fillers



ESTELITE SIGMA QUICK (TOKUYAMA)



Tetric EvoCeram (Ivoclar Vivadent)

Physical properties

Flexural strength	115 MPa
Flexural modulus	8.7 GPa
Compressive strength	400 MPa

Source: TOKUYAMA DENTAL R&D

Pack sizes available

Syringe Kit of 3:

- 3 single syringes (3.8g each) in shades A2, A3, OA3

Syringe Kit of 6:

- 6 syringes (3.8g each) in 6 shades A2, A3, OA1, OA2, OA3, OPA2

Syringe Intro Kit:

- 6 syringes (3.8g) in 6 shades A1, A2, A3, A3.5, OA2, OPA2
- 1 x 1ml BOND FORCE II with 25 x microbrushes and 1 x mixing dish
- 1 shade selector with 20 shades

Syringe System Kit:

- 6 syringes (3.8g each) in 6 shades A1, A2, A3, A3.5, OA3, OPA2
- 3 single syringes (1.8g each) ESTELITE FLOW QUICK in shades A2, A3, OA3
- 27 applicator tips
- 1 x 5ml BOND FORCE II with 50 x microbrushes and 1 x mixing dish
- 1 shade selector with 20 shades

Refill:

- Single syringe (3.8g)

Capsule Intro Kit:

- 40 capsules (0.2g each) in 6 shades 5 x A1, 10 x A2, 10 x A3, 5 x A3.5, 5 x OA3, 5 x OPA2
- 1 x 1ml BOND FORCE II with 25 x microbrushes and 1 x mixing dish, 1 shade selector with 20 shades

Refill:

- 20 capsules (0.2g each)
- Shade Selector with 20 shades

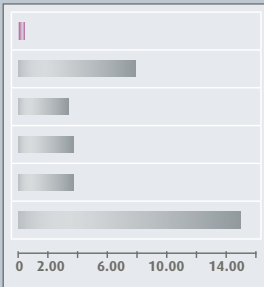


Single syringe

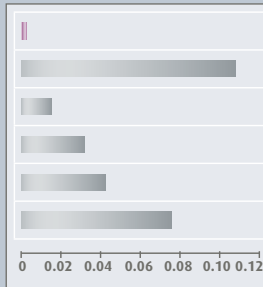


Capsules

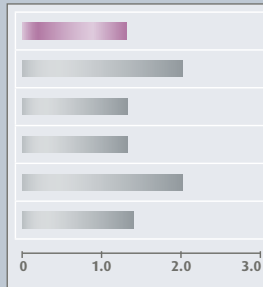
Abrasion test with antagonists [μm]



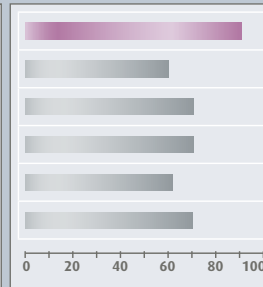
Abrasion test [mm^3]



Shrinkage [%]



Lustre [%]



ESTELITE SIGMA QUICK

Venus

Premise

Tetric EvoCeram

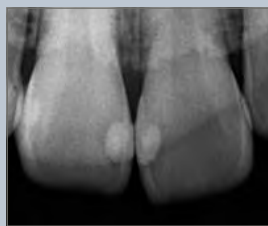
Esthet-X

Supreme XT

Source: TOKUYAMA DENTAL R&D



Very user-friendly – the material does not stick to the instrument



Excellent radiopacity of ESTELITE SIGMA QUICK

Available in 20 different shades

Standard	(14)														
		A1	A2	A3	A3.5	A4	A5	B1	B2	B3	B4	C1	C2	C3	CE(Inc.)
Bleach	(2)														
Opalescent	(3)														
Opaque	(1)														
		BW	WE	OA1	OA2	OA3	OPA2								

ESTELITE FLOW QUICK

Flowable composite – perfect aesthetics



Syringe Kit of 3



Capsules

Indications

- ✦ Anterior and posterior areas
- ✦ Cavity liner
- ✦ Blocking out undercuts
- ✦ Composite/ceramic repair

Properties

- ✦ Choice of two viscosities
- ✦ Rapid curing in 10 seconds
- ✦ Extended working time of 90 seconds
- ✦ High lustre durability
- ✦ Low shrinkage
- ✦ Excellent polishability

Technical information

Physical properties

Flexural strength	156 MPa
Flexural modulus	8.5 GPa
Compressive strength	391 MPa

Source: TOKUYAMA
DENTAL R&D

Pack sizes available

Syringe Kit of 3:

- 3 single syringes (1.8g each) in 3 shades
A2, A3, A3.5

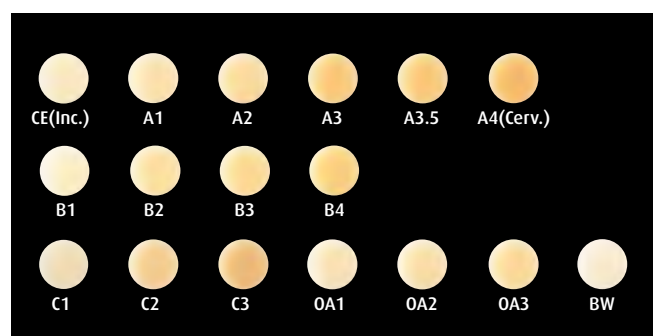
Refill:

- Single syringe (1.8g)
- Single L-syringe (3.6g)

Refill:

- 20 capsules (0.2g each)

Available in 17 different shades



ESTELITE FLOW QUICK HIGH FLOW

Flowable composites



Single syringe



Capsules

Indications

- ✦ Anterior and posterior areas
- ✦ Cavity liner
- ✦ Blocking out undercuts
- ✦ Composite/ceramic repair

Properties

- ✦ Choice of two viscosities
- ✦ Rapid curing in 10 seconds
- ✦ Extended working time of 90 seconds
- ✦ High lustre durability
- ✦ Low shrinkage
- ✦ Excellent polishability

Technical information

Physical properties

Flexural strength	160 MPa
Flexural modulus	9.6 GPa
Compressive strength	458 MPa

Source: TOKUYAMA
DENTAL R&D

Pack sizes available

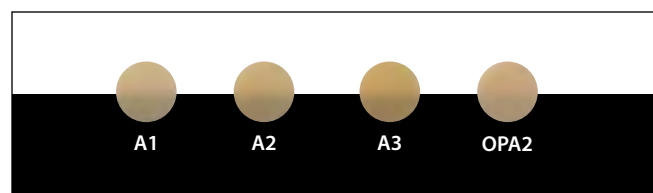
Refill:

- Single syringe (3.6g)

Refill:

- 20 capsules (0.2g each)

Available in 4 different shades



ESTELITE LV

Flowable composite



Single syringes

Indications

ESTELITE LV High Flow:

- ✦ Small cavities, extended fissure sealing, cavity liner

ESTELITE LV Medium Flow:

- ✦ All fields of application for flow composites

ESTELITE LV Low Flow:

- ✦ Class V cavities, small cavities in classes I, II, III

Properties

- ✦ Choice of three viscosities
- ✦ Chameleon effect
- ✦ Excellent polishability
- ✦ High lustre durability
- ✦ Low shrinkage
- ✦ Easy handling



Highflow

Mediumflow

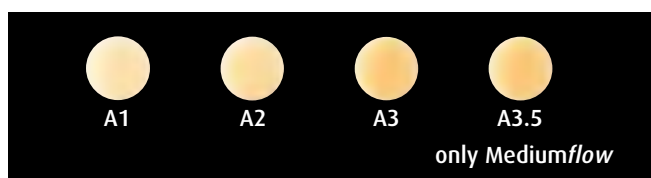
Lowflow

Pack sizes available

Refill:

- High Flow single syringe (3g)
- Medium Flow single syringe (3g)
- Low Flow single syringe (3g)

Available in 3 different shades



only Mediumflow

ESTELITE POSTERIOR QUICK

Posterior composite



Single syringe

Indications

- ✦ Posterior area
- ✦ Composite/ceramic repair

Properties

- ✦ Unique chameleon effect
- ✦ High physical properties
- ✦ Rapid curing in 10 seconds
- ✦ Optimal handling
- ✦ Low linear shrinkage
- ✦ High radiopacity

Technical information

Physical properties

Flexural strength	209 MPa
Flexural modulus	20.2 GPa
Compressive strength	443 MPa

Source: TOKUYAMA
DENTAL R&D

Pack sizes available

Refill:

- Single syringe (4.2g)

Available in 4 different shades



BOND FORCE II

Light-curing, self-etching
single-component adhesive



Indications

- + Light-curing, self-etching single-component adhesive
- + Adheres to prepared and unprepared enamel/dentine
- + Repair material for ceramics and composite

Properties

- + Excellent bond strength
- + Ultra-rapid, just 25 seconds
- + No etching, no irrigation, no mixing
- + Fluoride-releasing
- + Pleasantly thin, uniform film layer
- + Optimal distribution in stepped cavities
- + Perfect marginal integrity
- + Unique adhesion due to innovative, self-reinforcing 3D monomer (3D SR)
- + No storing in a fridge

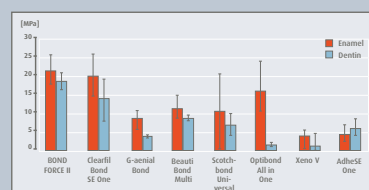
Pen properties

- + Over 33% saving on material
- + Fill level indicator
- + Uniform dosage with a click

Unit Dose properties

- + Particularly hygienic

Technical information



Micro tensile strength test
(After 3,000 thermal cycles)

Source: TOKUYAMA DENTAL R&D

Clinical use

Application 10 sec.



Apply BOND FORCE II

Drying 5 sec.



5 sec. gentle air-drying

Curing 10 sec.



Light-curing

Pack sizes available

Complete Bottle Kit:

- 1 x 5ml bottle
- 25 x microbrushes
- 1 x mixing dish

Refill:

- 1 x 5ml bottle

Pen Intro Kit:

- 1 x 2ml pen
- 25 x microbrushes
- 1 x mixing dish

Refill:

- 2 x 2ml pen

Unit Dose Standard Kit:

- 50 x 0,1ml Unit Dose
- 50 x microbrushes

EE-BOND & ETCHING GEL HV

Special bonding system for selective enamel etching



Intro Kit



Etching Gel HV

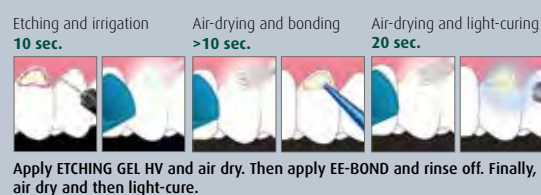
Indications

- ✦ Light-curing, self-etching single-component adhesive with high-viscosity etching gel for etching the enamel
- ✦ Adheres to prepared and unprepared enamel/dentine
- ✦ Repair material for ceramics and composite

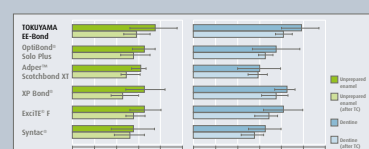
Properties

- ✦ Extremely high bond strength
- ✦ Perfect marginal integrity
- ✦ Unique adhesion due to innovative, self-reinforcing 3D monomer (3D SR)
- ✦ Short treatment time due to easy handling
- ✦ Little technique sensitivity
- ✦ Fluoride-releasing
- ✦ Avoidance of post-operative sensitivity

Clinical use



Technical information



Micro tensile strength before and after thermal cycling test [MPa]

Source: TOKUYAMA DENTAL R&D

Pack sizes available

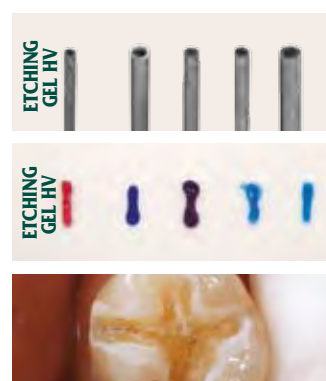
Intro Kit:

- 1 x 5ml bottle
- 1 x 2.5ml syringe of ETCHING GEL HV
- 25 x microbrushes
- 1 x mixing dish
- 10 x applicator tips (superfine)

Refill:

- 1 x 5ml bottle
- 2 x 2.5ml syringe of ETCHING GEL HV
- 50 x applicator tips (superfine)

Optimised etching gel



The high-viscosity etching gel can be applied to exactly the right spot using the superfine applicator tips.

ONE-UP BOND F PLUS

Light-curing, self-etching adhesive with visual support



Complete Kit

Indications

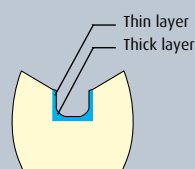
- ✦ Light-curing adhesive with visual support for composite fillings
- ✦ Can be used for all cavity classes

Properties

- ✦ Error minimisation due to visual control
- ✦ Much shorter treatment time due to easy handling
- ✦ Secure adhesion due to extremely reliable bond strength
- ✦ Fluoride-releasing
- ✦ No etching, no irrigation or drying
- ✦ Quick'n Easy Box – user-friendly handling

Technical information

Very high bond strength - no matter whether the adhesive layers are thick or thin. The thickness of the adhesive layer varies depending on the morphology of the cavity. The monomer penetrates deep into the tooth substance, demineralises it and establishes a firm bond with the tooth.



Initial bond strength

Enamel	20.7 MPa
Dentine	24.2 MPa

Thermal cycling test

Enamel	21.1 MPa
Dentine	23.6 MPa

Source: TOKUYAMA DENTAL R&D

Pack sizes available

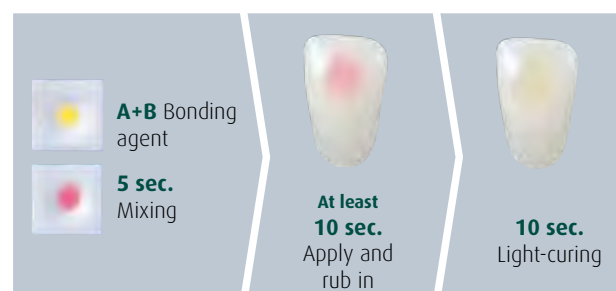
Complete Kit:

- 2 x 5ml bottle
- Quick'n Easy Box
- Mixing dish
- 50 applicator tips incl. holder
- Mixing dish

Refill:

- Fluid A (5ml)
- Fluid B (5ml)

Clinical use



SHIELD FORCE PLUS



Protective sealant for hypersensitive dentine



Complete Kit

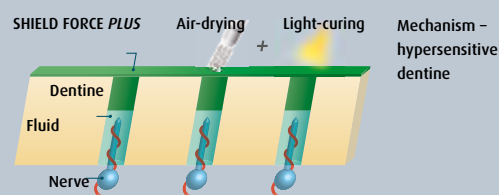
Indications

- ✦ Treatment of hypersensitive dentine
- ✦ Reduction of abrasion and erosion of exposed cervical dentine
- ✦ Alleviation and/or prevention of tooth sensitivity following tooth preparation for direct or indirect restorations.

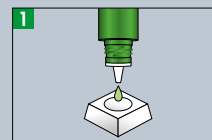
Properties

- ✦ Rapid and effective treatment of hypersensitive dentine
- ✦ Excellent sealing effect
- ✦ Long-lasting protective layer
- ✦ Easy handling
- ✦ Thin film layer

Technical information



Clinical use



Dispensing



Apply and wait 10 seconds



5 seconds of light air-drying and 5 seconds of intensive air-drying



Light cure for 10 seconds

Pack sizes available

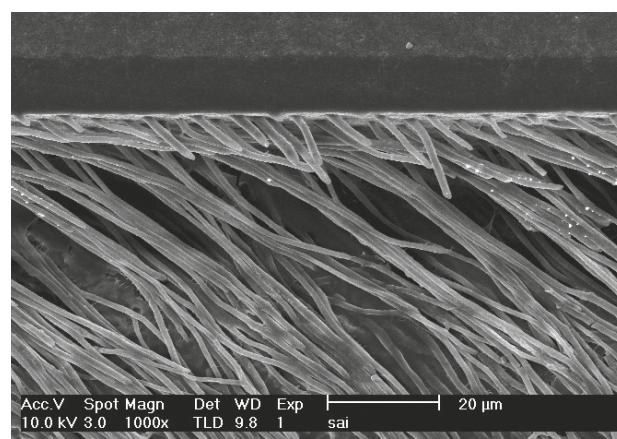
Complete Kit:

- 1 x 3ml bottle
- 25 x microbrushes
- 1 x mixing dish

Refill:

- 1 x 3ml bottle

SHIELD FORCE PLUS forms compact resin villi in the dentinal tubules (1000x magnification).



Source: TOKUYAMA DENTAL R&D



Indications

- + Cementation of crowns, bridges, inlays, and onlays made of glass/oxide ceramics (porcelain, zirconia and alumina), metals/alloys (precious and non-precious) and resin materials including inorganic filler (composite materials).
- + Repair of fractured porcelain fused to metal crowns and all ceramic restorations
- + Cementation of veneers
- + Cementation of adhesion bridges
- + Cementation of metal or resin cores, metal or glass-fiber posts

Properties

- + Reliable bond strength to tooth structure and prosthesis
- + Excellent physical properties and high wear resistance
- + Low water absorption and low solubility
- + Thin film thickness
- + Outstanding esthetics and color stability
- + Good radiopacity
- + Simple handling and easy removal of excess material

Technical information

Physical properties

Tensile bond strength enamel	33,1 MPa
Tensile bond strength dentine	29,2 GPa
Flexural strength	158 MPa
Film thickness	8 µm
Solubility	0,0 µg /mm ³
Water absorption	12,0 µg /mm ³

Source: TOKUYAMA
DENTAL R&D

Pack sizes available

Complete Kit (Universal only):

- Paste Universal (9.4g)
- Estelink Bond A (3ml)
- Estelink Bond B (3ml)
- Universal Primer A (1ml)
- Universal Primer B (1ml)
- 1 x mixing dish
- 25 x microbrushes
- 10 x applicator tips

Refill:

- Paste Universal (9.4g)
- Paste Brown (9.4g)
- Paste Clear (9.4g)
- Paste White-Opaque (9.4g)
- Estelink Kit (3ml Bond A + Bond B each)
- Estelink Bond A (3ml)
- Estelink Bond B (3ml)
- Universal Primer Kit (2ml Primer A + Primer B each)
- Universal Primer A (2ml)
- Universal Primer B (2ml)
- 40 x applicator tips

Available in 4 shades



UNIVERSAL PRIMER

Primer for adhesive bonding of prosthetic materials



Complete Kit



Refill

Indications

- ✦ Pretreatment of glass/oxide ceramics (porcelain, zirconia and alumina), metals/alloys (precious and non-precious) and resin materials including inorganic filler (composite materials) in preparation for bonding with polymerizable resin materials, such as:
- 1) Bonding of inlays, onlays, crowns, bridges, veneers, cores, artificial teeth, orthodontic brackets etc.
 - 2) Repair of ceramic, metal and composite materials (including porcelain fused metals).
 - 3) Bonding of denture resin to metal base, clasp or attachment
 - 4) Repair of denture with metal base, clasp or attachment
 - 5) Bonding of opaque resin to a metal base in the fabrication of resin-faced stainless steel crowns

Properties

- ✦ Easy of use
- ✦ Reliable bond strength to a wide variety of prosthetic materials
- ✦ Low technique sensitivity
- ✦ Economical due to its versatility

Technical information

Physical properties

Precious metal	23,0 MPa
Non-precious metal	23,8 MPa
Glass ceramics	33,5 MPa
Resin composite	21,8 MPa
Oxide ceramics	25,1 MPa

Source: TOKUYAMA
DENTAL R&D

Pack sizes available

Complete Kit:

- Universal Primer A + Primer B (2ml each)

Refill:

- Universal Primer A (2ml)
- Universal Primer B (2ml)

Range of indications



IONOTITE F

Self-adhesive composite ionomer luting cement system



Complete Kit

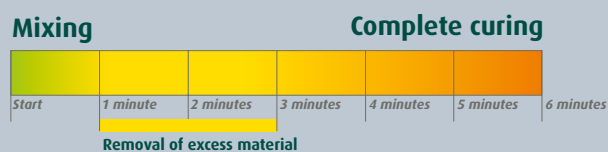
Indications

- + Cementation of porcelain bonded to metal (PBM) crowns and bridges
- + Cementation of cast crowns and bridges with acrylic facings
- + Cementation of inlays, onlays, crowns and bridges made of metal
- + Cementation of cast posts and cores

Properties

- + Very high level of adhesion to all metals
- + No etching, bonding or priming required
- + Long-term resistance to water and saliva
- + Long-lasting release of fluoride ions
- + Thin film thickness

Treatment time



Technical information

Tensile stress

Tooth enamel	12.0 MPa
Dentine	8.7 MPa
Precious metal	18.0 MPa

Source: TOKUYAMA
DENTAL R&D

Pack sizes available

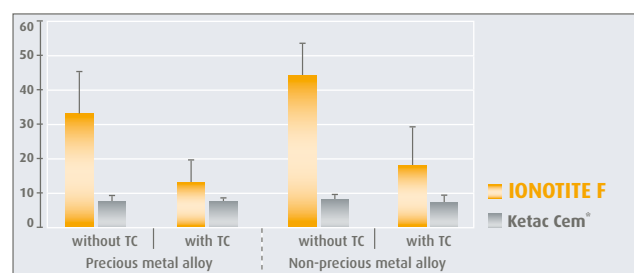
Complete Kit:

- Powder (20g)
- Fluid (6.4ml)
- 1 x powder measuring scoop
- 1 x mixing pad

Refill:

- Powder (20g)
- Fluid (6.4ml)

Tensile bond strength [MPa]



Source: Extract from
a study conducted
by the University
of Ulm,
Prof. Haller

REBASE II FAST

Hard relining material chairside method



Complete Kit

Indications

- + Long-lasting, hard relining material
- + Relining complete dentures
- + Relining partial dentures
- + Following soft relining, when the mucosa has healed
- + Chairside use

Properties

- + MMA-free
- + No development of odour
- + Excellent precision fit / optimal comfort
- + Minimal generation of heat
- + Time-saving
- + Reduces laboratory costs

Clinical use



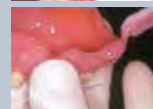
1. Check
precision fit



2. Prepare the
prosthesis



3. Application
of adhesive



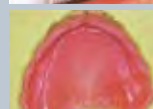
4. Dispensing,
mixing and
applying
Rebase II



5. Inserting the
prosthesis



6. Articulation
motions



7. Working
on the
prosthesis



8. To increase the
hardness: soak
in Tokuso Resin
Hardener



9. Finishing
and
polishing



10. Check
precision fit

Pack sizes available

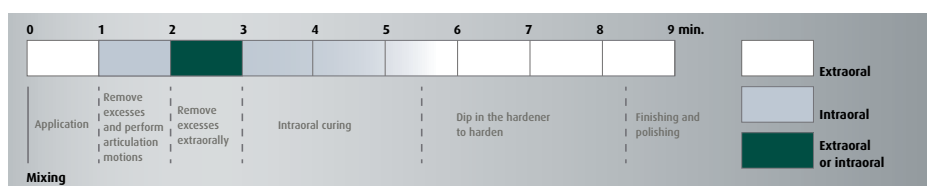
Complete Kit:

- Powder (80g)
- Liquid (50ml)
- Adhesive (15ml)
- Measuring cup, pipette, mixing crucible, spatula, plastic cup, brush
- Hardener (48g) and scoop

Refill:

- Powder (80g)
- Liquid (50ml)
- Adhesive (15ml)
- Hardener (48g)

Treatment time



SOFRELINER TOUGH M_(MEDIUM) & S_(SOFT)

Addition-cured silicone based soft relining material



Complete M Kit



Complete S Kit

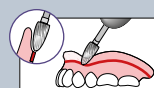
Indications

- Pain caused by sharp ridges of alveolar bone and atrophy of mucosa
- Poor retention caused by extreme ridge atrophy
- Major undercuts or maxillary/mandibular tori
- Retention of over dentures before the final attachment is placed
- Temporary relining or tissue conditioning (TOUGH S only)

Properties

- 100% addition-cured silicone
- Shore hardness 43 (M) / 24 (S)
- Shelf life 2½ years (M) / 1½ year (S)
- Extreme tear resistance
- Surface and shade stability
- Excellent precision fit

Clinical use



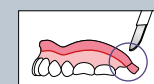
1. Beveling the edges



2. Application of the primer



3. Apply SOFRELINER TOUGH



4. Finishing the prosthesis



5. After 2 years use

Pack sizes available

Complete Kit Medium:

- Cartridge (2 x 27g)
- Primer (10ml)
- 10 x mixing tips XS
- Polishing system

Refill:

- Cartridge (2 x 27g)
- Primer (10ml)
- Mixing tips XS or S, 50 pcs. each
- Polishing system
- Dispensing gun

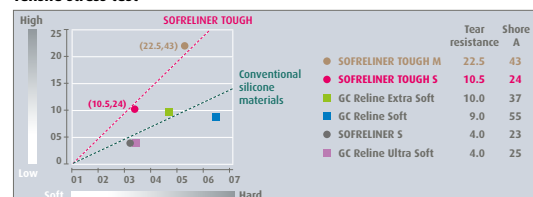
Complete Kit Soft:

- Cartridge (2 x 26g)
- Primer (10ml)
- 10 x mixing tips XS
- Polishing system

Refill:

- Cartridge (2 x 26g)
- Primer (10ml)
- Mixing tip XS or S, 50 pcs. each
- Polishing system
- Dispensing gun

Tensile stress test



Shore hardness comparison test



SILICONE REMOVER

Remover of soft relining material



Bottle

Indications

- ✦ For removing elastic relining material, silicone-based
- ✦ For removing soft silicone impression materials

Properties

- ✦ Easy handling
- ✦ Removes soft relining materials from the prosthesis in seconds without leaving any residues
- ✦ No painstaking removal of old material by grinding is required

Pack sizes available

- 1 x 7ml bottle

ORGANISER

For PLTs and syringes



Syringe and PLT organiser

Indications

- ✦ Syringe organiser provides space for a total of 13 syringes
- ✦ PLT organiser provides space for a total of 20 different PLT packs, ESTELITE SIGMA QUICK, ESTELITE FLOW QUICK and ESTELITE FLOW QUICK HIGH FLOW

Properties

- ✦ Syringe organiser and PLT organiser – standing upright for quick access
- ✦ Syringe organiser autoclavable
- ✦ Practical
- ✦ Space-saving
- ✦ Clearly arranged
- ✦ Time-saving
- ✦ Efficient

Pack sizes available

- PLT organiser
- Syringe organiser

YOUR ORDER

Practice stamp

Your customer number (if any)

--	--	--	--	--	--	--

Invoicing depot

Contact person

Email address

Article name	Pack size	Order quantity	Sales unit
Filling materials			
ESTELITE ASTERIA			
ESTELITE COLOR			
ESTELITE SIGMA QUICK			
ESTELITE POSTERIOR QUICK			
ESTELITE FLOW QUICK			
ESTELITE FLOW QUICK HIGH FLOW			
ESTELITE LV			
Bonding systems			
BOND FORCE II			
EE-BOND & ETCHING GEL HV			
ONE-UP BOND F PLUS			
Desensitizer			
SHIELD FORCE PLUS			
Cements			
ESTECEM			
UNIVERSAL PRIMER			
IONOTITE F			
Relining materials			
REBASE II FAST			
SOFRELINER TOUGH M			
SOFRELINER TOUGH S			
SILICONE REMOVER			
Accessories			
Syringe organiser			
PLT organiser			
			Net amount
			plus VAT
			Total amount

No delivery charge will be made for a order amount of at least €100. If the net order amount is below €100, we make a nominal delivery charge of €5. By signing, I recognise Tokuyama's Conditions of Sale 01/2001.

Date

Signature



www.tokuyama-dental.de
info@tokuyama-dental.de



+49 (0)2505 938513



+49 (0)2505 938515

Manufacturer



Tokuyama Dental Deutschland GmbH
Siemensstrasse 46 | 48341 Altenberge | Germany
Tel.: +49 (0)2505 938513 | Fax: +49 (0)2505 938515
www.tokuyama-dental.de | info@tokuyama-dental.de